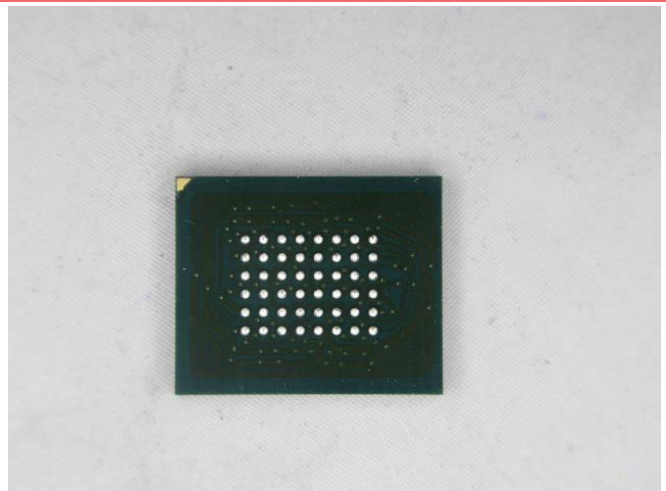


PRODUCT ANALYSIS REPORT

Customer	IC FORTUNE	Reference No.	N/A
Manufacturer	ISSI	Requestor	N/A
Part Number	IS61WV51216BLL-10MLI	Report Date/Time	2023-12-21
Lab technician	Yonghua Cai	Analysis engineer	Dream Hu
Datasheet	https://www.issi.com/WW/pdf/61-64WV51216.pdf		
Description	512K x 16 HIGH-SPEED ASYNCHRONOUS CMOS STAIC RAM WITH 3.3V SUPPLY		
Analysis	<p>2000 pieces of ISSI IS61WV51216BLL-10MLI were received for analysis, from which 5 pieces were used for X-ray, 1 piece was used for Decapsulation analysis.</p> <p>X-ray analysis reveals consistent internal structure. X-ray analysis does not exhibit internal connection defects, voids or other apparent anomalies. Decapsulation reveals die architecture with "ISSI, 8146AM, 2005, MAY" die markings, verifying that the sample was manufactured by ISSI, but not traceability to requested part number. The traceability to requested manufacturer indicates that the sample is authentic. Sample does not exhibit cracks or scratches on the die surface.</p> <p>OEM marking: <input type="text" value="ISSI"/></p> <p>Part number: <input type="text" value="No traceable part number"/></p>		



Body (top-side)



Body (bottom-side)

Address:

White Horse Laboratories Ltd.

4A Building H, Gang Zhi Long Science Park, No.6. Qinglong Road, Qinghua Community, Long hua District, Shenzhen, Guangdong, China

Disclaimer: No part of this publication may be reproduced or distributed in any form or by any means, or stored in database or retrieval system, without the prior

permission of White Horse Laboratories

How are we doing?

Phone Number

86-755-8374-1887

URL:

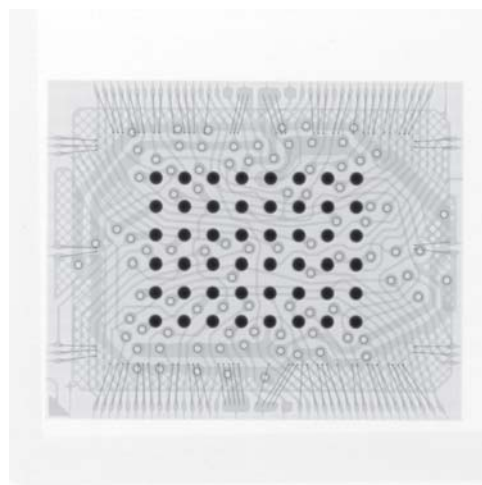
<http://whitehorselabs.com><http://survey.constantcontact.com/survey/a07ef2oojxsjcyhj9x9/a0136jicq06ad/questions>

Receiving inspection

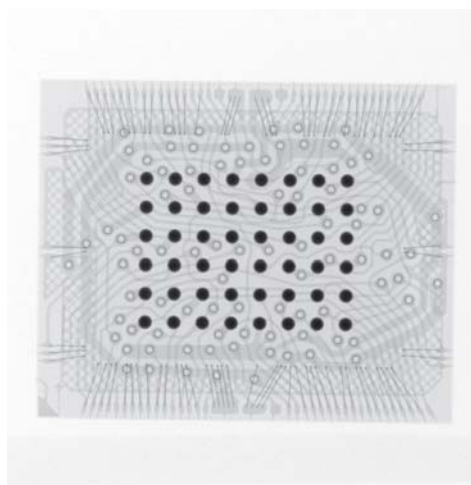
Number of Boxes	1
Condition of Boxes	Undamaged
Type of Box	Generic
Barcode Label	Yes, matches printing
Package Carrier	Tape and reel
Unit Weight	N/A

Packaging Details

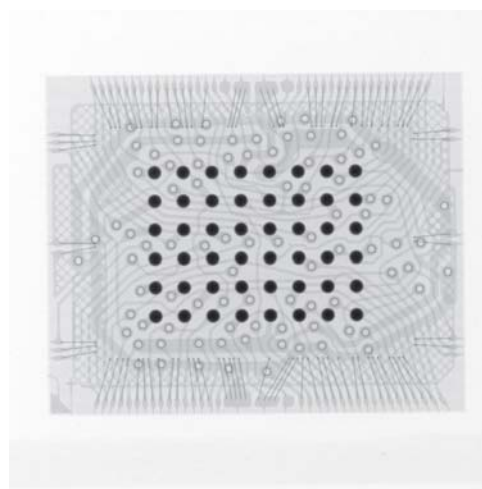
ESD Protection	Yes
MSL Protection	MSL 3,No
Desiccant	Yes
HIC Card	Yes, Read 5%
Bag open Date/Time 2023-12-20	



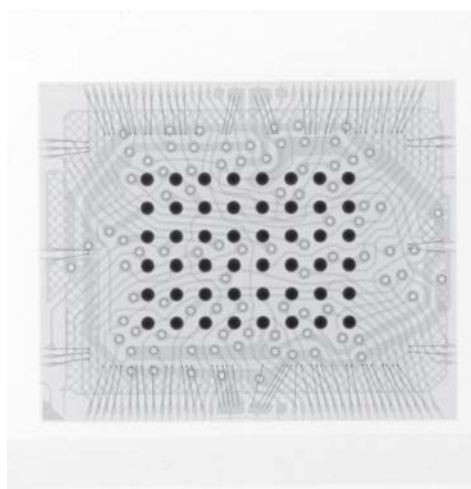
X-RAY SAMPLE 1 Internal profile



X-RAY SAMPLE 2 Internal profile



X-RAY SAMPLE 3 Internal profile



X-RAY SAMPLE 4 Internal profile

Address:

White Horse Laboratories Ltd.

4A Building H, Gang Zhi Long Science Park , No6. Qinglong Road, Qinghua Community, Long hua District, Shenzhen, Guangdong, China

Disclaimer: No part of this publication may be reproduced or distributed in any form or by any means, or stored in database or retrieval system, without the prior permission of White Horse Laboratories

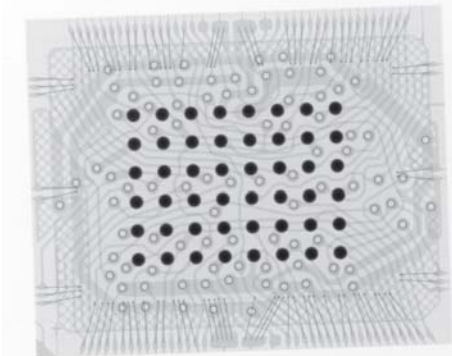
How are we doing? <http://survey.constantcontact.com/survey/a07ef2oojxsjcyhj9x9/a0136jicq06ad/questions>

Phone Number

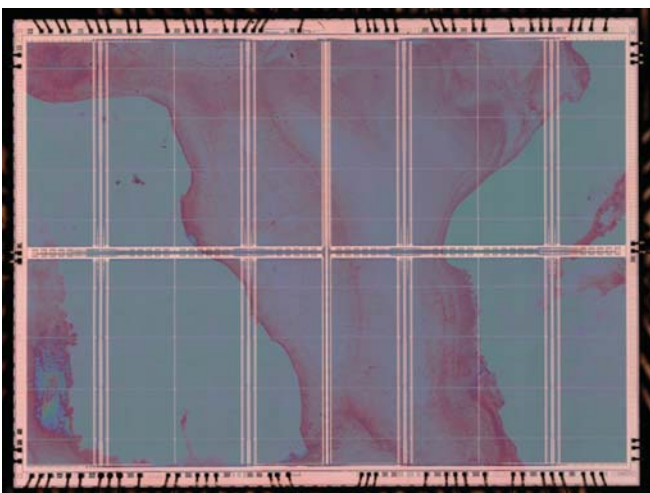
86-755-8374-1887

URL:

<http://whitehorlabs.com>



X-RAY SAMPLE 5 Internal profile



Decapsulation sample D/C:2231:Die architecture



Decapsulation sample D/C:2231:ISSI 8146AM 2005 MAY



Decapsulation sample D/C:2231:Die marking

Address:
White Horse Laboratories Ltd.

Phone Number
86-755-8374-1887

URL:
<http://whitehorselabs.com>

4A Building H, Gang Zhi Long Science Park, No6. Qinglong Road, Qinghua Community, Long hua District, Shenzhen, Guangdong, China

Disclaimer: No part of this publication may be reproduced or distributed in any form or by any means, or stored in database or retrieval system, without the prior permission of White Horse Laboratories

How are we doing? <http://survey.constantcontact.com/survey/a07ef2oojxsjcyhj9x9/a0136jicq06ad/questions>